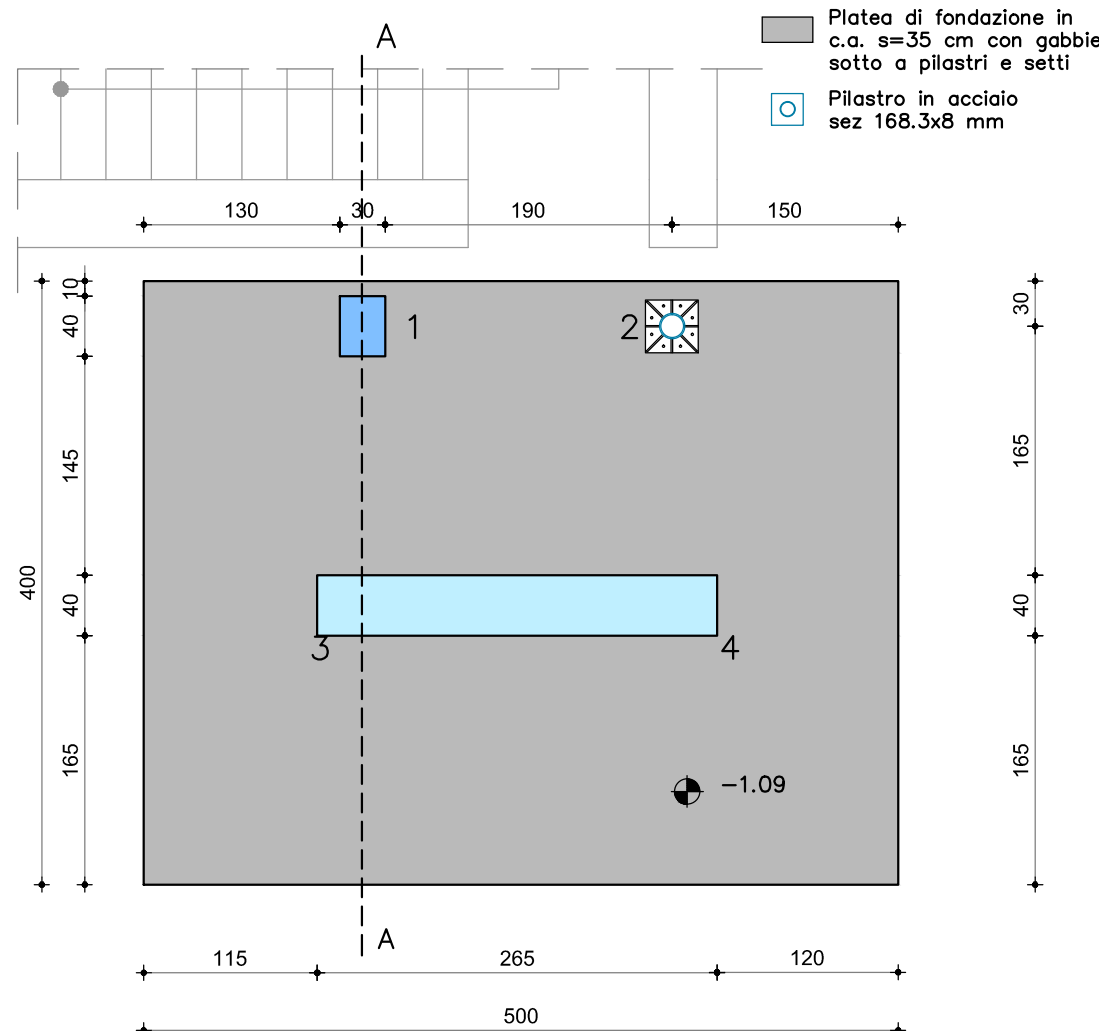



Pianta fondazioni  
e primo impalcato  
scala 1:50



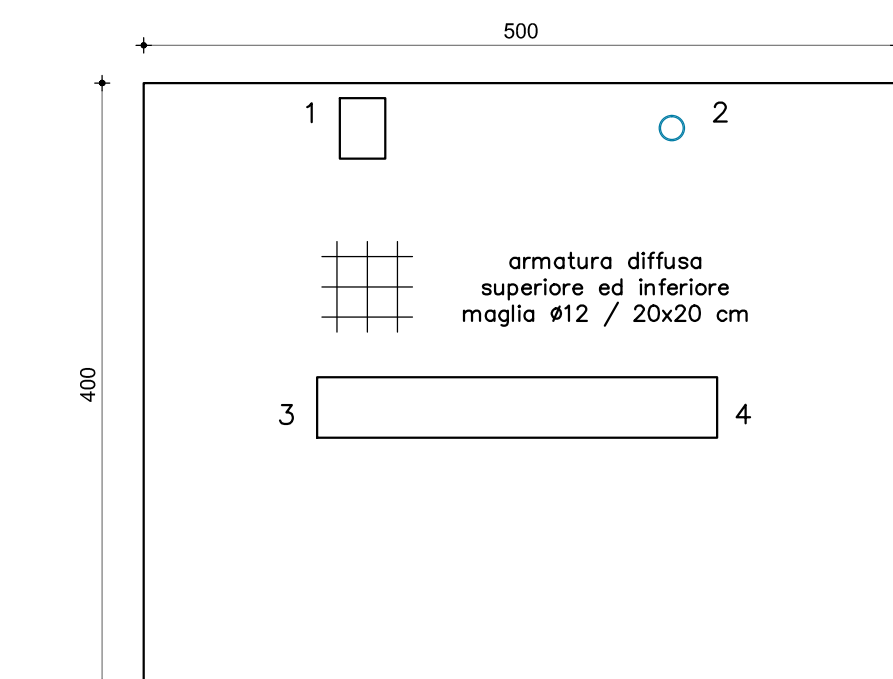
## LEGENDA

 Pilastri in c.a.

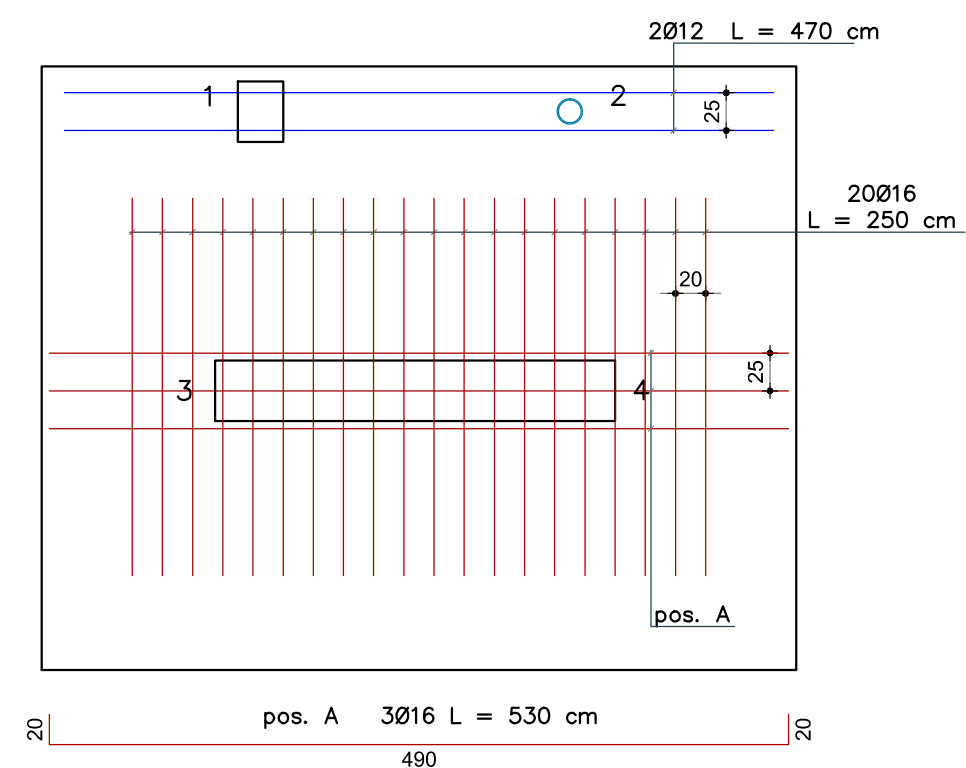
 Muri-setti in c.a.

 Pilastro in acciaio  
sez. 168 3x8 mm

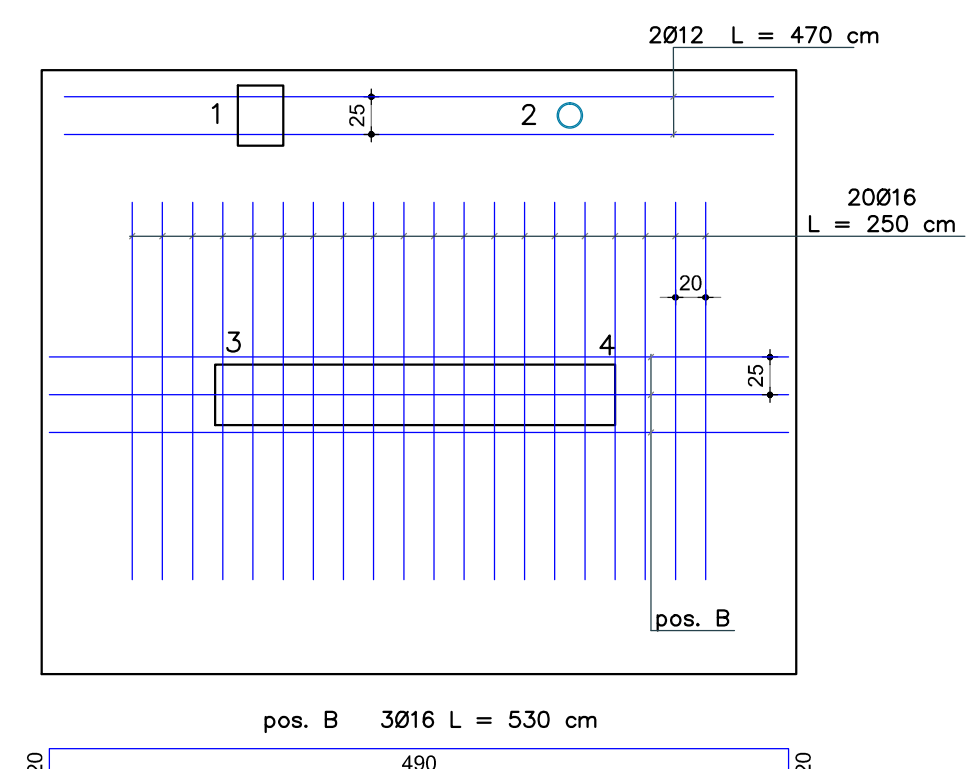
Platea:  
armatura diffusa  
scala 1:50



Platea:  
armatura aggiuntiva inferiore  
scale 1:50



Platea:  
armatura aggiuntiva superiore  
scale 1:50

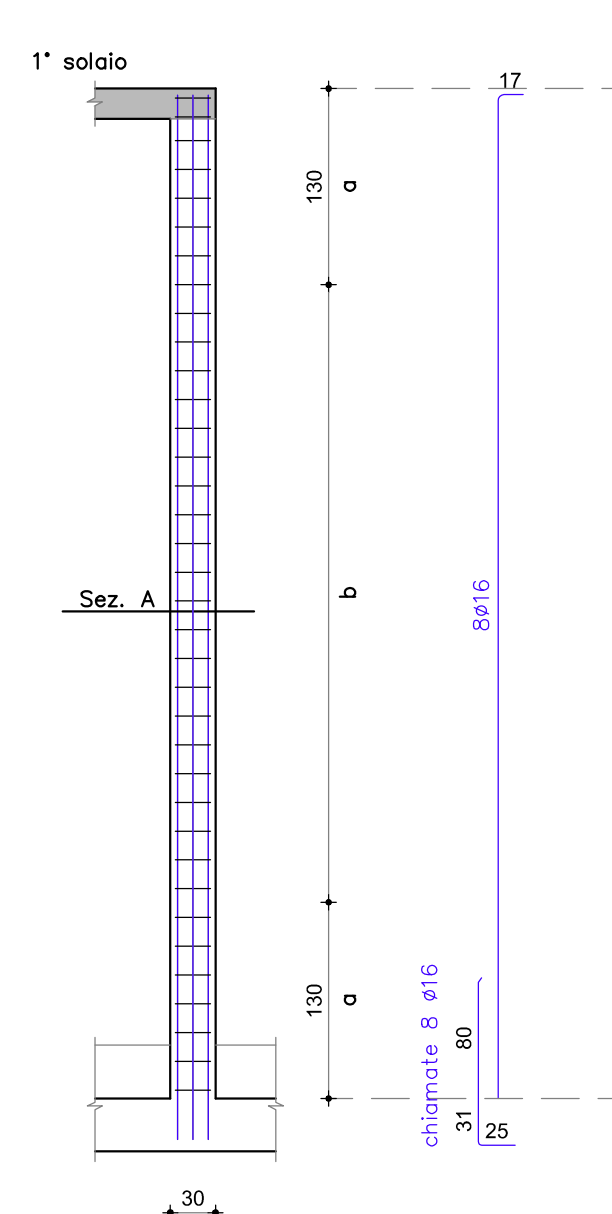


Nota: le quote altimetriche sono  
indicative e devono essere verificate  
in cantiere dalla D.L.

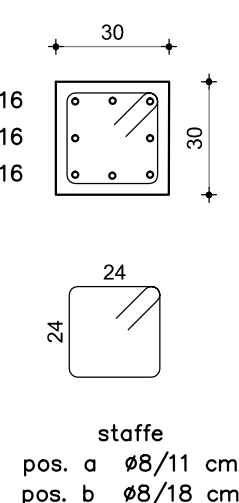
## MATERIALI IMPIEGATI

ACCIAIO:			
TONDINO ACCIAIOSO AD ADERENZA MIGLIORATA B450C			
CALCESTRUZZO:	CLASSE RESISTENZA	CLASSE ESPOSIZIONE	CLASSE CONSISTENZA
		EN206	
MAGRONE	Rck 200 (C16/20)	XC2	S2
FONDAZIONI	Rck 300 (C25/30)	XC2	S3
PILASTRI, TRAVI, SETTI, SOLAI	Rck 350 (C28/35)	XC3	S4
	GRADO COMPATTAZIONE Gc > 0.97		
ACCIAIO DA CARPENTERIA:S275 jr		BULLONI: classe 8.8	

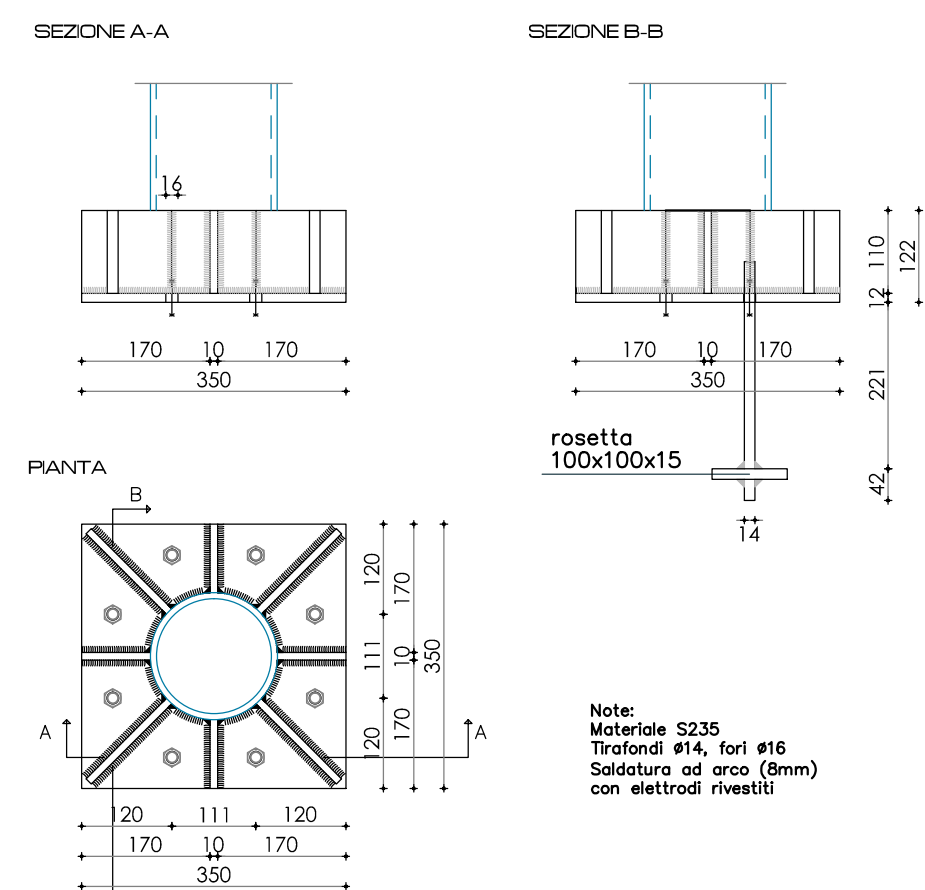
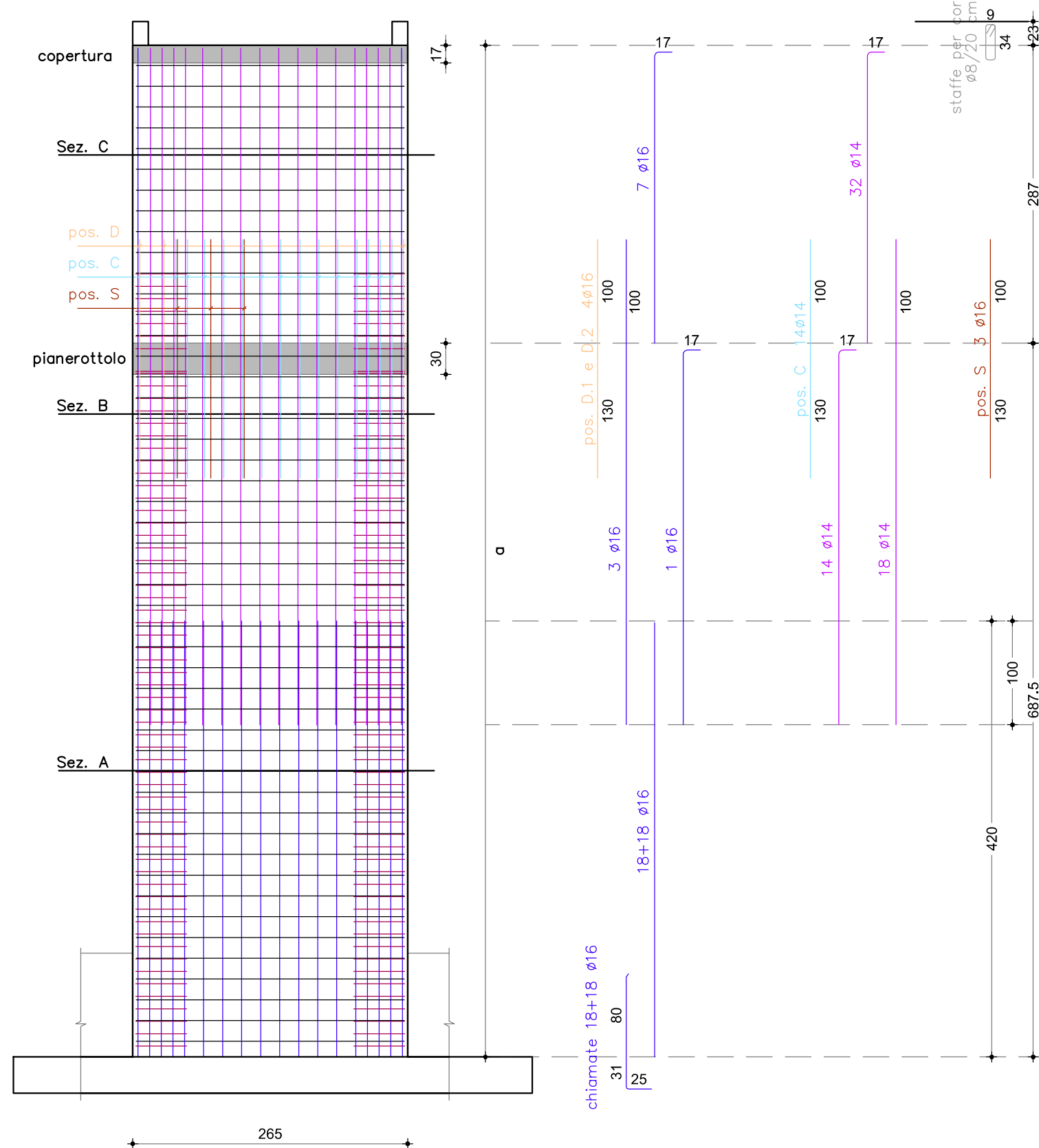
Pilastro 1  
scale 1:50



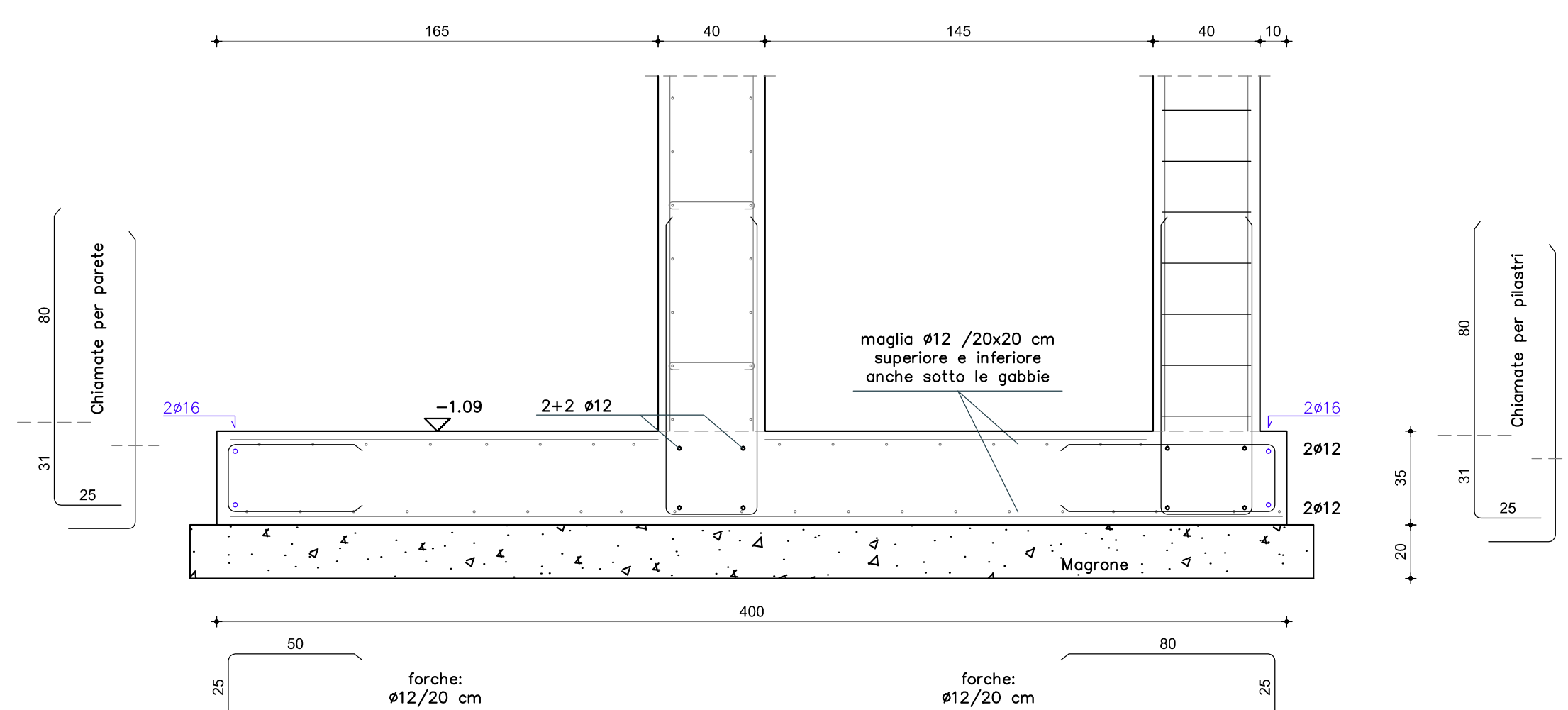
Sezione A  
30x30 cm  
scala 1/20



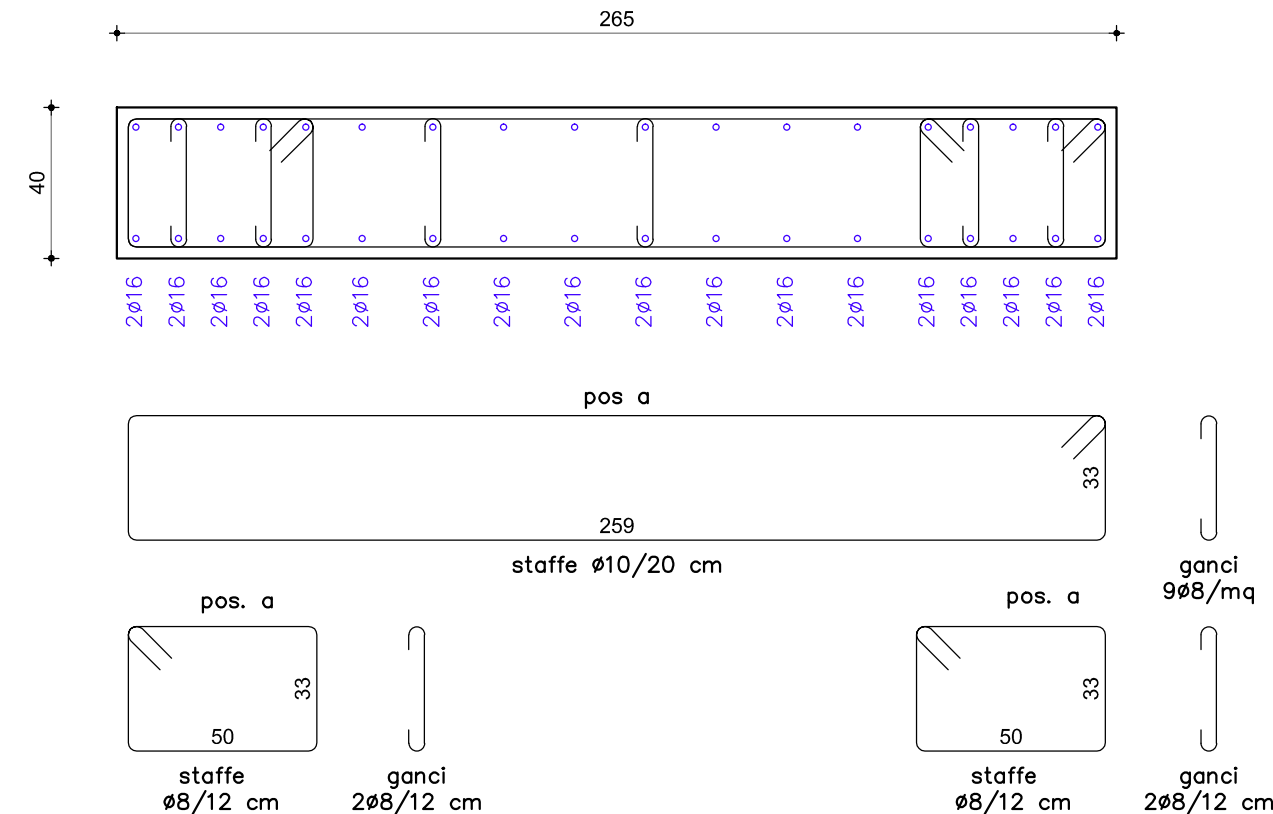
**PIASTRA PILASTRO 2**  
Connessione pilastro 168.3X8 - fondaz.  
Scala 1:10

Setto 3-4  
scale 150

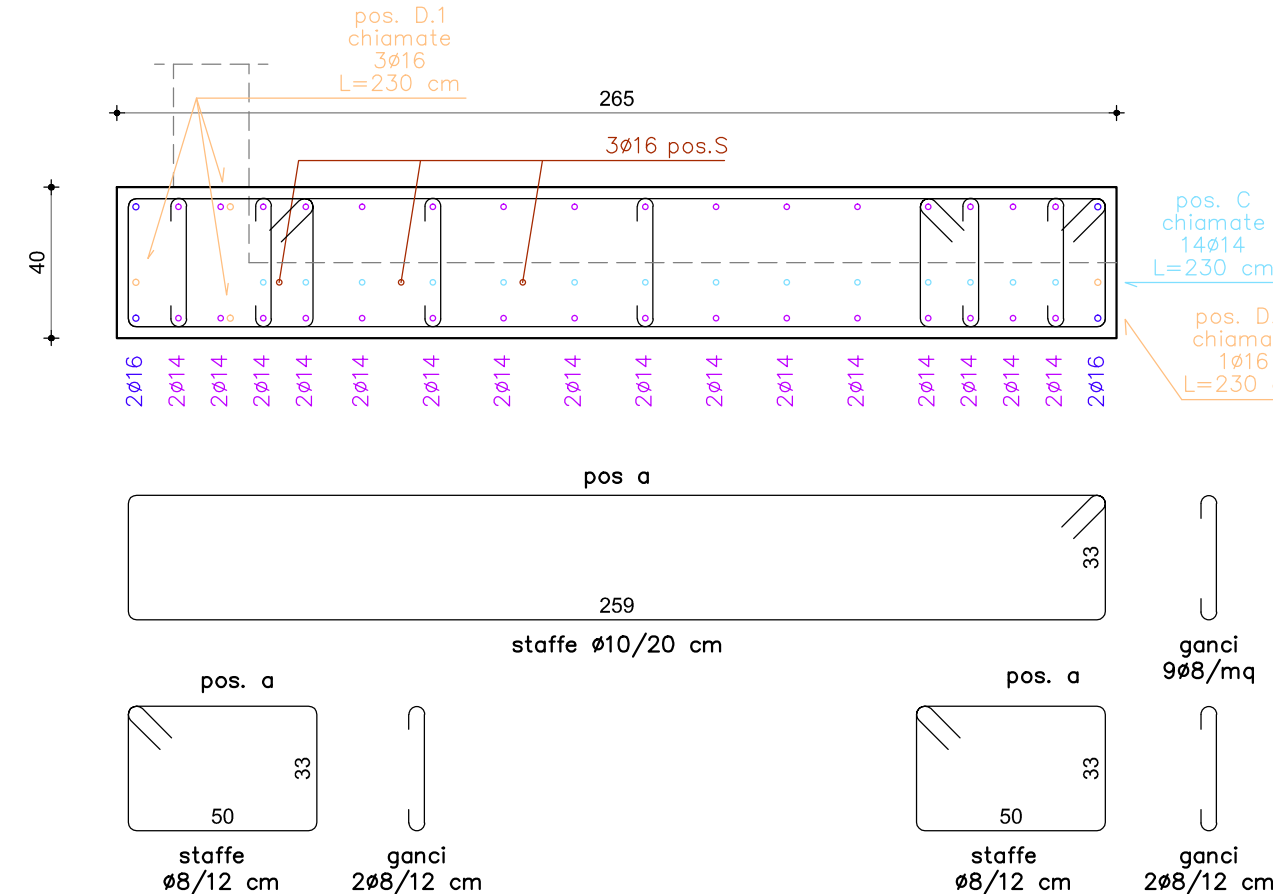
Sezione tipo A-A:  
collegamento pareti e pilastri alla fondazione  
scala 120



Sezione A: 265x40 cm  
scala 1/20



Sezione B: 265x40 cm  
scala 1/20



Sezione C: 265x20 cm  
scala 1/20

